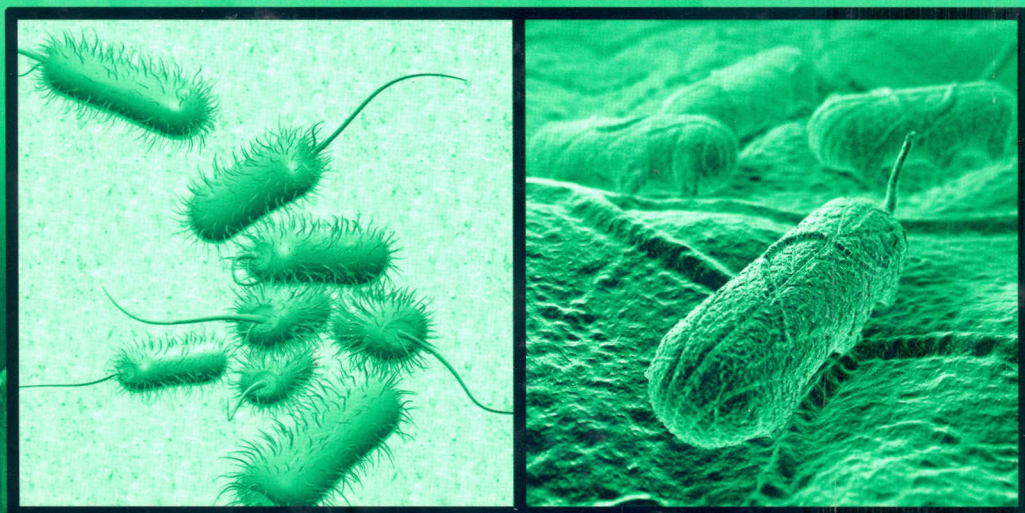


Rapid Detection and Characterization of Foodborne Pathogens by Molecular Techniques



Robert E. Levin



CRC Press
Taylor & Francis Group

Contents

Preface.....	xiii
The Author.....	xv
Chapter 1	
Molecular Techniques for Detecting, Quantifying, and Subspecies Typing of Foodborne Pathogenic Bacteria.....	1
I. The Polymerase Chain Reaction (PCR).....	1
A. Introduction.....	1
B. Requirements for PCR.....	1
C. Sample Preparation without Enrichment.....	3
D. Lysing of Cells and Isolation of Bacterial DNA.....	3
E. PCR for Identification of Pure Cultures.....	4
F. Quantitative PCR.....	4
G. Use of an Internal Standard for Quantitative PCR.....	5
H. Construction of an Internal Standard for Quantitative PCR.....	6
I. Construction of a Calibration Curve for Quantitative PCR.....	7
II. Real-Time PCR (Rti-PCR).....	8
A. Introduction.....	8
B. Advantages of Rti-PCR.....	8
C. Mechanisms of Rti-PCR.....	10
1. SYBR Green.....	10
2. TaqMan™ Probes.....	11
3. Fluorescent Resonance Energy Transfer (FRET).....	12
4. Molecular Beacons™.....	14
5. Unique Fluorogenic Primers.....	15
D. Theory of Quantitative Real-Time PCR (QRti-PCR).....	16
E. Problems and Limitations of QRti-PCR.....	19
III. Nested PCR.....	20
A. Introduction.....	20
IV. Loop-Mediated Isothermal Amplification (LAMP) Assay.....	22
A. Introduction.....	22
V. Pulsed-Field Gel Electrophoresis (PFGE).....	23
A. Introduction.....	23
B. Mechanism of PFGE.....	23
C. Interpretation of PFGE Banding Patterns.....	24
VI. Random Amplification of Polymorphic DNA (RAPD).....	25
A. Introduction.....	25
B. Mechanism of RAPD.....	26
VII. Multilocus Sequence Typing (MLST).....	27
A. Introduction.....	27
VIII. Restriction Fragment Length Polymorphism (RFLP) and PCR-RFLP.....	27
A. Introduction.....	27

IX. Amplified Fragment Length Polymorphism (AFLP).....	28
A. Introduction	28
References	28
Chapter 2	
<i>Escherichia coli</i> O157:H7	33
I. Characteristics of the Organism.....	33
II. Virulence Factors	33
A. Hemolysins	33
B. Intimin	34
C. Shiga-Like Toxins.....	34
D. Locus for Enterocyte Effacement.....	34
E. Extracellular Serine Protease	35
F. Additional Virulence Factors.....	35
III. Phenotypic Variation of <i>E. coli</i> O157:H7.....	35
A. Conventional PCR	36
B. Multiplex PCR	49
IV. PCR Assays Involving Molecular Probes and Real-Time PCR (Rti-PCR)	52
V. Loop-Mediated Isothermal Amplification (LAMP) of DNA	54
VI. Immunomagnetic Separation and PCR.....	54
VII. Restriction Fragment Length Polymorphism.....	55
VIII. Subspecies Typing of <i>E. coli</i> O157:H7 Isolates.....	55
References	56
Chapter 3	
<i>Shigella</i>	63
I. Characteristics of the Genus	63
II. Virulence Factors	64
III. PCR Detection of <i>Shigellae</i>	65
A. Conventional PCR Assays	65
B. Microarrays.....	71
C. Multiplex PCR	72
D. Immunocapture PCR.....	73
E. Molecular Typing.....	73
References	75
Chapter 4	
<i>Salmonella</i>	79
I. Characteristics of the Genus	79
II. Molecular Techniques	82
A. Conventional PCR	82
B. Real-Time PCR (Rti-PCR)	110

C.	Multiplex PCR (mPCR).....	115
D.	Pulsed Field Gel Electrophoresis (PFGE).....	122
E.	Subtracted Restriction Fingerprinting (SFP).....	127
F.	Random Amplified Polymorphic DNA (RAPD) Analysis.....	127
	References.....	129

Chapter 5

	<i>Vibrio vulnificus</i>	139
I.	Characteristics of the Organism.....	139
II.	Virulence Factors.....	140
	A. Capsule Production.....	140
	B. Extracellular Virulence Factors.....	141
	C. Serum-Iron Availability.....	141
III.	Enrichment and Isolation Media.....	142
	A. Alkaline Peptone Salt Broth (APS).....	142
	B. Colistin-Polymyxin- β -Cellobiose (CPC) Agar.....	142
	C. Thiosulfate-Citrate-Bile-Salts Sucrose (TCBS) Agar.....	142
	D. <i>Vibrio vulnificus</i> (VV) Agar.....	143
	E. Sodium Dodecyl Sulfate-Polymyxin-Sucrose (SPS) Agar.....	143
	F. Cellobiose-Colistin (CC) Agar.....	143
	G. <i>Vibrio vulnificus</i> Medium (VVM).....	143
IV.	Identification of <i>V. vulnificus</i> Isolates.....	143
	A. Biochemical Characteristics.....	143
	B. Serotyping and Immunological Techniques.....	144
V.	Typing of <i>V. vulnificus</i> Isolates below the Species Level.....	145
	A. Biogroups.....	145
VI.	Viable but Nonculturable (VBNC) <i>V. vulnificus</i>	152
VII.	Molecular Methods for Detection and Typing.....	153
	A. Conventional PCR.....	153
	B. Multiplex PCR.....	154
	C. Real-Time PCR (Rti-PCR).....	155
	D. RAPD.....	157
	E. Ribotyping.....	158
	F. 16S rRNA Sequencing.....	159
	G. Oligonucleotide Probe.....	159
	References.....	161

Chapter 6

	<i>Vibrio parahaemolyticus</i>	167
I.	Characteristics of the Organism.....	167
II.	Clinical Symptoms Due to Infections by <i>V. parahaemolyticus</i>	168
III.	Ecology of <i>V. parahaemolyticus</i>	168
IV.	Phenotypic Characteristics of <i>V. parahaemolyticus</i>	169
	A. General.....	169

B.	Flagellation	170
C.	Antigenic Properties	171
D.	Hemolysins	172
	1. General	172
	2. Direct Acting Hemolysins	172
E.	H ₂ S Production	179
F.	Urease (Uh) Production	179
V.	Sensitivity of <i>V. parahaemolyticus</i> to Low Temperatures	180
VI.	Isolation and Cultivation of <i>V. parahaemolyticus</i>	181
VII.	Preservation of <i>V. parahaemolyticus</i> Isolates	182
VIII.	Bacteriophage for <i>V. parahaemolyticus</i>	182
IX.	Use of PCR for Detection of <i>V. parahaemolyticus</i>	182
X.	Molecular Typing of <i>V. parahaemolyticus</i> Isolates below the Species Level	188
XI.	The O3:K6 Pandemic Clone	188
	References	192

Chapter 7

	<i>Vibrio cholerae</i>	203
I.	Characteristics of the Organism	203
II.	Factors Associated with the Virulence of <i>V. cholerae</i>	204
III.	PCR Detection, Identification, and Characterization of <i>V. cholerae</i>	204
IV.	Molecular Typing of <i>V. cholerae</i> Isolates	223
V.	Acquisition of Antibiotic Resistance	227
VI.	Biotype Conversion by Phage	227
	References	229

Chapter 8

	<i>Aeromonas hydrophila</i>	235
I.	Characteristics of the Organism	235
II.	PCR Detection	236
III.	Distribution of Toxin Genes	237
IV.	Genotyping Using Hemolysin and Aerolysin Genes	241
V.	Restriction Fragment Length Polymorphism (RFLP)	241
	References	242

Chapter 9

	<i>Plesiomonas shigelloides</i>	245
I.	Characteristics of the Organism	245
II.	Nomenclature and Taxonomy	245
III.	Physiological and Biochemical Characteristics	246
IV.	Ecological Distribution	246
V.	Toxins and Invasive Factors	248

VI. β -Hemolysis	249
VII. Isolation	249
VIII. Serology	250
IX. Epidemiology and Outbreaks.....	252
X. Application of PCR.....	252
A. Conventional PCR	252
B. Real-Time PCR (Rti-PCR)	255
References	256

Chapter 10

<i>Campylobacter jejuni</i>	261
I. Characteristics of the Organism.....	261
A. Phenotypic Characteristics of Campylobacters	262
II. Ecological Distribution of Campylobacters	262
A. Environmental Factors.....	262
1. Aquatic Sources of Campylobacters	263
2. Wildlife as a Potential Reservoir for Infection by <i>C. jejuni</i>	264
3. Campylobacters Associated with Farm and Domesticated Animals.....	266
B. Vertical versus Horizontal Transmission among Poultry	269
III. Virulence Factors	269
A. Toxins.....	269
B. Cell Adhesion Factors.....	275
C. Lipopolysaccharide (LPS)	276
D. Capsule Formation.....	277
E. Virulence Plasmid	277
IV. Isolation of Campylobacters from Foods	277
V. Serotyping of Campylobacters and Immunological Detection	283
VI. Bacteriophage Typing of <i>C. jejuni</i>	284
VII. Molecular Methods of Detecting and Typing Campylobacters	285
A. Genes Used	285
B. PCR.....	285
C. Randomly Amplified Polymorphic DNA (RAPD) Analysis.....	305
1. Pulsed Field Gel Electrophoresis (PFGE).....	307
2. Restriction Fragment Length Polymorphism (RFLP) Analysis.....	310
D. Amplified Fragment Length Polymorphism (AFLP)	313
1. <i>In Situ</i> Colony Hybridization	313
E. Multilocus Sequence Typing (MLST).....	314
F. Loop-Mediated Isothermal Amplification (LAMP).....	315
G. Nucleic Acid Sequence Based Amplification (NASBA)	315
H. Restriction Endonuclease Analysis.....	316
VIII. The Viable but Nonculturable (VBNC) State of Campylobacters	316

IX.	The Coccoid Form of <i>C. jejuni</i>	319
X.	Immunomagnetic Capture of <i>C. jejuni</i>	319
	References	320

Chapter 11

	<i>Staphylococcus aureus</i>	337
I.	Characteristics of the Organism.....	337
II.	Molecular Techniques for Detection and Identification of <i>S. aureus</i>	338
	A. PCR Used to Detect and Identify <i>S. aureus</i>	338
	B. Peptide Nucleic Acid Fluorescence <i>In Situ</i> Hybridization (PNA FISH) for Detection of <i>S. aureus</i>	341
	C. Conventional and Real-Time PCR (Rti-PCR) Detection of Enterotoxin Genes	341
	D. Loop-Mediated Isothermal Amplification (LAMP) Assay for <i>se</i> Toxin Genes	348
	E. PCR Detection of the <i>tst</i> Gene in <i>S. aureus</i> Strains	349
	F. Molecular Typing of <i>S. aureus</i> Isolates (RAPD, PFGE, RFLP, PCR-RFLP)	349
	G. Multilocus Sequence Typing (MLST) of <i>S. aureus</i> Isolates	355
	H. PCR-Immuno Assays for Detection of <i>S. aureus</i> Exotoxin Genes	358
	I. Exfoliative Toxin (ET) Producing Strains of <i>S. aureus</i>	359
	J. PCR Detection of Methicillin-Resistant <i>S. aureus</i> Strains	360
	K. Enterotoxin Production by <i>S. intermedius</i>	362
III.	The Role of <i>S. aureus</i> Bacteriophage (Phage) in Pathogenesis.....	362
	References	401

Chapter 12

	<i>Listeria monocytogenes</i>	411
I.	Characteristics of the Organism.....	411
	A. Gene Sequences Used in PCR Assays for <i>L. monocytogenes</i>	412
	B. PCR Identification of <i>L. monocytogenes</i> and Other Members of the Genus <i>Listeria</i>	413
	C. Direct PCR Detection of <i>L. monocytogenes</i> in Foods without Enrichment Cultivation.....	422
	D. PCR Detection of <i>L. monocytogenes</i> in Foods Following Enrichment Cultivation.....	424
	E. Nested PCR.....	427
	F. Multiplex PCR (mPCR).....	429
	G. Real-Time PCR (Rti-PCR)	431
	H. Application of Random Amplified Polymorphic DNA (RAPD) Analysis to <i>L. monocytogenes</i> Isolates.....	432
	I. Application of Pulsed Field Gel Electrophoresis (PFGE) to <i>L. monocytogenes</i> Isolates.....	441

J.	Comparison of RAPD, PFGE, and Other Molecular Methods for Typing <i>L. monocytogenes</i> Isolates.....	445
K.	Microarray Technology	448
L.	PCR Determination of Serotype Divisions	448
	References.....	449

Chapter 13

	<i>Clostridium botulinum</i>	457
I.	Characteristics of the Organism.....	457
II.	Relationship between Botulism and Seafood.....	457
III.	Infant Botulism	458
	A. Historical Aspects and Incidence	458
	B. Implication of Honey in Infant Botulism	459
IV.	Molecular Techniques Applied to <i>C. botulinum</i>	460
	A. PCR Detection of <i>C. botulinum</i>	460
	B. Molecular Typing of <i>Clostridium botulinum</i> Strains	465
	C. Molecular Methods for Differentiating between Group I and Group II Strains	468
	D. Molecular Methods for Detection of BoNTs.....	469
	1. Reverse Transcription PCR for Indirect Measurement of BoNT Production	469
	2. Immunopolymerase Chain Reaction Assays for Ultrasensitive BoNT Detection	470
	References.....	481

Chapter 14

	<i>Clostridium perfringens</i>	487
I.	Characteristics of the Organism.....	487
II.	Molecular Methods for Detection of <i>C. perfringens</i>	488
	A. PCR.....	488
	B. Molecular Probes.....	504
III.	Molecular Typing of Isolates.....	506
	A. Molecular Organization of the CPE Gene.....	506
	B. Genotyping	510
	C. Random Amplified Polymorphic DNA (RAPD) Typing.....	514
	D. Pulsed Field Gel Electrophoresis (PFGE) Typing	514
	E. Amplified Fragment Length Polymorphism (AFLP)	515
	F. Ribotyping	516
	G. Multiple-Locus Variable Number Tandem Repeat Loci (VNTR).....	517
	References.....	517

Chapter 15	
<i>Bacillus cereus</i>	523
I. Characteristics of the Organism.....	523
II. Selective Isolation of <i>B. cereus</i>	524
A. Selective Agar Media.....	524
III. The Emetic Toxin Cereulide	525
A. Synthesis of Cereulide and Location of the Responsible Peptide Synthetase.....	525
B. Phenotypic Characteristics of Emetic Toxin Producing Strains.....	525
C. RAPD Typing of Emetic Strains of <i>B. cereus</i>	525
IV. Enterotoxins of <i>B. cereus</i>	526
A. Major Enterotoxins of <i>B. cereus</i>	526
V. Molecular Methods for Detection and Confirmation of <i>B. cereus</i>	526
A. PCR.....	526
1. PCR Detection of Emetic Strains of <i>B. cereus</i>	526
2. PCR Detection and Confirmation of <i>B. cereus</i> and Members of the <i>B. cereus</i> Group	529
VI. Molecular Typing of <i>B. cereus</i> Isolates.....	550
A. Genotyping of <i>B. cereus</i> Isolates.....	550
B. Multilocus Sequence Typing (MLST) of <i>B. cereus</i> Isolates	556
C. RAPD Typing	556
D. Ribotyping	556
E. PCR Restriction Fragment Length Polymorphism (PCR-RFLP)	557
F. Microarrays.....	557
References.....	559
Index	565