

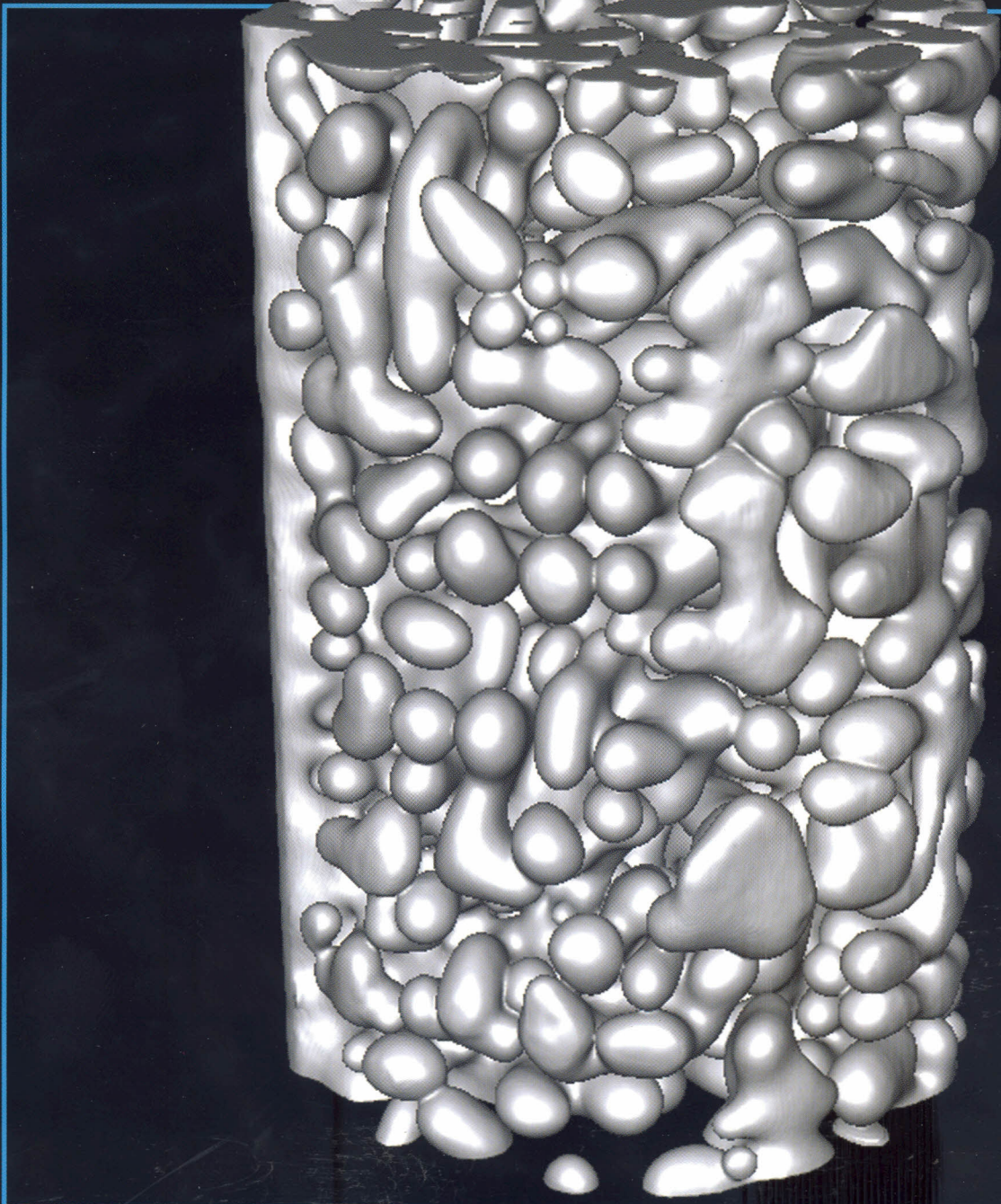
JOM

**SEEING CITES:
Impact Factor
Trending
Upward for
JOM**

SEPTEMBER 2012

An official publication of The Minerals, Metals & Materials Society

jom.tms.org



TMS

 Springer

MODELING AND CHARACTERIZATION

- Bridging the Gap: Linking Simulation and Testing
- Modeling in the Casting Process
- Materials Research in Microgravity

BRIDGING THE GAP: LINKING SIMULATION AND TESTING

1031: Bridging the Gap: Linking Simulation and Testing:

Paul E. Krajewski,
John E. Carsley, Mark R. Stoudt,
and Yuri Hovanski

1032: Reducing Vehicle Weight and Improving U.S. Energy Efficiency Using Integrated Computational Materials Engineering: William J. Joost

1039: Bridging the Design–Manufacturing–Materials Data Gap: Material Properties for Optimum Design and Manufacturing Performance in Light Vehicle Steel-Intensive Body Structures: Blake K. Zuidema

1048: Measurements of Powder–Polymer Mixture Properties and Their Use in Powder Injection Molding Simulations for Aluminum Nitride: Kunal H. Kate, Valmikanathan P. Onbattuvelli, Ravi K. Enneti, Shi W. Lee, Seong-Jin Park, and Sundar V. Atre

MODELING IN THE CASTING PROCESS

1059: Computational Fluid Dynamics Modeling: Application to Transport Phenomena During the Casting Process: Lifeng Zhang

1063: Modeling the Entrapment of Nonmetallic Inclusions in Steel Continuous-Casting Billets: Lifeng Zhang and Yufeng Wang

1075: Similarity of Mold Metallurgy: Hong Lei

1080: Water Modeling of Self-Braking Submerged Entry Nozzle Used for Steel Continuous Casting Mold: Yongfeng Chen, Lifeng Zhang, Shufeng Yang, and Jingshe Li

MATERIALS RESEARCH IN MICROGRAVITY

1087: Materials Science in Reduced Gravity: Douglas M. Matson

1089: Levitated Liquid Dynamics in Reduced Gravity and Gravity-Compensating Magnetic Fields: Valdis Bojarevics and Robert W. Hyers

1097: Advanced Solidification Studies on Transparent Alloy Systems: A New European Solidification Insert for Material Science Glovebox on Board the International Space Station: A. Ludwig, J. Mogeritsch, M. Kolbe, G. Zimmermann, L. Sturz, N. Bergeon, B. Billia, G. Faivre, S. Akamatsu, S. Bottin-Rousseau, and D. Voss

1102: Rapid Crystallization of Levitated and Undercooled Semiconducting Material Melts: Yusuke Ishibashi, Kazuhiko Kuribayashi, and Katsuhisa Nagayama

1109: Nucleation and Thermophysical Properties of Glass-Forming Liquids: A.K. Gangopadhyay, R.W. Hyers, and K.F. Kelton

FEATURES

1028: A Letter from the TMS President: What Does TMS Membership Say About You?: Wolfgang Schneider

1029: JOM Impact Factor Sees Significant Boost: Lynne Robinson

ALSO IN THIS ISSUE

Member News

The Young Leader

1021: In the Final Analysis

1022: News & Update

1027: Your Member Connection

1118: Meetings Calendar

1120: Materials Resource Center: Jobs, Consultants, Marketplace

1121: End Notes: Congressional Fellow Works at the Epicenter of U.S. Energy Policy

About the Cover: This month's technical theme of modeling and characterization was also featured at the International Conference on 3D Materials Science 2012, sponsored by TMS in July. Details will be offered in an upcoming conference review; for a sneak preview, the cover features an image presented at that conference by Peter W. Voorhees, Northwestern University. It represents a liquid-solid mixture of an Al-26wt%Cu alloy, directionally solidified and then coarsened by holding at a constant 560°C for 12 hours. Interface location data was collected approximately every four minutes using in-situ, 4D x-ray tomography. This work is supported by the Department of Energy, Basic Energy Sciences, DE-FG02-99ER45782/012.