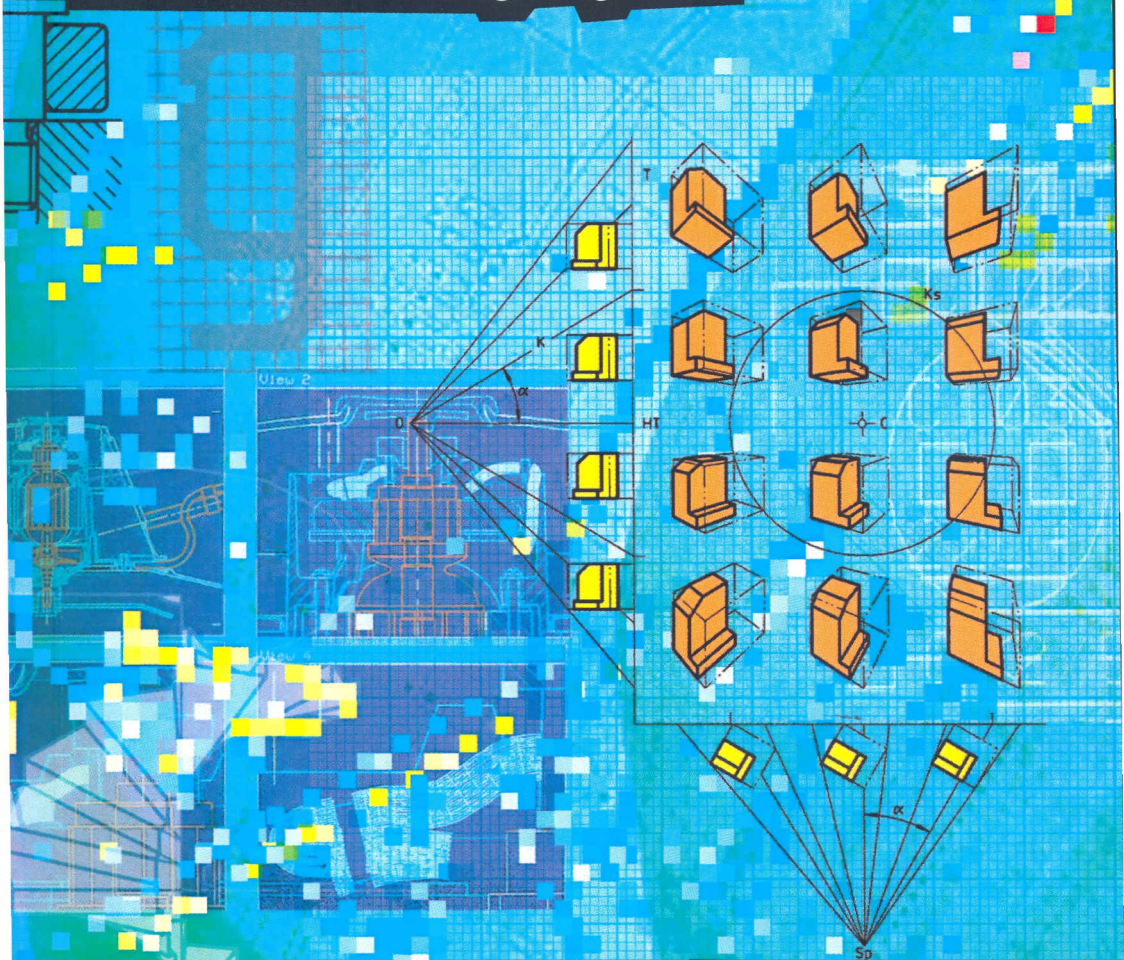


Technical drawings

Vol. 1 Technical drawings in general



ISO Standards
Handbook



International
Organization for
Standardization

Technical drawings

Vol.1 Technical drawings in general

ISO 10110-1:2004
Technical drawings -
Surface texture -
Profile method -
Part 1: Symbols,
definitions and
terminology

ISO 10110-2:2004
Technical drawings -
Surface texture -
Profile method -
Part 2: Sampling
procedures

ISO 10110-3:2004
Technical drawings -
Surface texture -
Profile method -
Part 3: Evaluation
of profiles

ISO 10110-4:2004
Technical drawings -
Surface texture -
Profile method -
Part 4: Measurement
of profiles

ISO 10110-5:2004
Technical drawings -
Surface texture -
Profile method -
Part 5: Measurement
of profiles

ISO 10110-6:2004
Technical drawings -
Surface texture -
Profile method -
Part 6: Measurement
of profiles

ISO 10110-7:2004
Technical drawings -
Surface texture -
Profile method -
Part 7: Measurement
of profiles

ISO 10110-8:2004
Technical drawings -
Surface texture -
Profile method -
Part 8: Measurement
of profiles

ISO 10110-9:2004
Technical drawings -
Surface texture -
Profile method -
Part 9: Measurement
of profiles

Technical drawings in general
ISO 10110-1:2004
Technical drawings -
Surface texture -
Profile method -
Part 1: Symbols,
definitions and
terminology
ISO 10110-2:2004
Technical drawings -
Surface texture -
Profile method -
Part 2: Sampling
procedures
ISO 10110-3:2004
Technical drawings -
Surface texture -
Profile method -
Part 3: Evaluation
of profiles
ISO 10110-4:2004
Technical drawings -
Surface texture -
Profile method -
Part 4: Measurement
of profiles
ISO 10110-5:2004
Technical drawings -
Surface texture -
Profile method -
Part 5: Measurement
of profiles
ISO 10110-6:2004
Technical drawings -
Surface texture -
Profile method -
Part 6: Measurement
of profiles
ISO 10110-7:2004
Technical drawings -
Surface texture -
Profile method -
Part 7: Measurement
of profiles
ISO 10110-8:2004
Technical drawings -
Surface texture -
Profile method -
Part 8: Measurement
of profiles
ISO 10110-9:2004
Technical drawings -
Surface texture -
Profile method -
Part 9: Measurement
of profiles

ISO
10110-1:2004
Technical drawings -
Surface texture -
Profile method -
Part 1: Symbols,
definitions and
terminology
10110-2:2004
Technical drawings -
Surface texture -
Profile method -
Part 2: Sampling
procedures
10110-3:2004
Technical drawings -
Surface texture -
Profile method -
Part 3: Evaluation
of profiles
10110-4:2004
Technical drawings -
Surface texture -
Profile method -
Part 4: Measurement
of profiles
10110-5:2004
Technical drawings -
Surface texture -
Profile method -
Part 5: Measurement
of profiles
10110-6:2004
Technical drawings -
Surface texture -
Profile method -
Part 6: Measurement
of profiles
10110-7:2004
Technical drawings -
Surface texture -
Profile method -
Part 7: Measurement
of profiles
10110-8:2004
Technical drawings -
Surface texture -
Profile method -
Part 8: Measurement
of profiles
10110-9:2004
Technical drawings -
Surface texture -
Profile method -
Part 9: Measurement
of profiles

CONTENTS

		Vol. 1	Vol. 2
Part 1: Technical drawings in general			
ISO 128-20:1996	Technical drawings — General principles of presentation — Part 20: Basic conventions for lines	17	
ISO 128-21:1997	Technical drawings — General principles of presentation — Part 21: Preparation of lines by CAD systems	31	
ISO 128-22:1999	Technical drawings — General principles of presentation — Part 22: Basic conventions and applications for leader lines and reference lines	47	
ISO 128-23:1999	Technical drawings — General principles of presentation — Part 23: Lines on construction drawings	57	
ISO 128-24:1999	Technical drawings — General principles of presentation — Part 24: Lines on mechanical engineering drawings	73	
ISO 128-25:1999	Technical drawings — General principles of presentation — Part 25: Lines on shipbuilding drawings	89	
ISO 128-30:2001	Technical drawings — General principles of presentation — Part 30: Basic conventions for views	101	
ISO 128-34:2001	Technical drawings — General principles of presentation — Part 34: Views on mechanical engineering drawings	117	
ISO 128-40:2001	Technical drawings — General principles of presentation — Part 40: Basic conventions for cuts and sections	135	
ISO 128-44:2001	Technical drawings — General principles of presentation — Part 44: Sections on mechanical engineering drawings	145	
ISO 128-50:2001	Technical drawings — General principles of presentation — Part 50: Basic conventions for representing areas on cuts and sections	157	

		Vol. 1	Vol. 2
ISO 129:1985	Technical drawings — Dimensioning — General principles, definitions, methods of execution and special indications	167	
ISO 406:1987	Technical drawings — Tolerancing of linear and angular dimensions	183	
ISO 2553:1992	Welded, brazed and soldered joints — Symbolic representation on drawings	189	
ISO 3098-0:1997	Technical product documentation — Lettering — Part 0: General requirements	243	
ISO 3098-2:2000	Technical product documentation — Lettering — Part 2: Latin alphabet, numerals and marks	255	
ISO 3098-3:2000	Technical product documentation — Lettering — Part 3: Greek alphabet	265	
ISO 3098-4:2000	Technical product documentation — Lettering — Part 4: Diacritical and particular marks for the Latin alphabet	275	
ISO 3098-5:1997	Technical product documentation — Lettering — Part 5: CAD lettering of the Latin alphabet, numerals and marks	287	
ISO 3098-6:2000	Technical product documentation — Lettering — Part 6: Cyrillic alphabet	355	
ISO 3272-1:1983	Microfilming of technical drawings and other drawing office documents — Part 1: Operating procedures	365	
ISO 3272-2:1994	Microfilming of technical drawings and other drawing office documents — Part 2: Quality criteria and control of 35 mm silver gelatin microfilms	371	
ISO 3272-3:2001	Microfilming of technical drawings and other drawing office documents — Part 3: Aperture card for 35 mm microfilm	381	
ISO 3272-4:1994	Microfilming of technical drawings and other drawing office documents — Part 4: Microfilming of drawings of special and exceptional elongated sizes	393	
ISO 3272-5:1999	Microfilming of technical drawings and other drawing office documents — Part 5: Test procedures for diazo duplicating of microfilm images in aperture cards	401	

		Vol. 1	Vol. 2
ISO 3272-6:2000	Microfilming of technical drawings and other drawing office documents — Part 6: Quality criteria and control of systems for enlargements from 35 mm microfilm	411	
ISO 5261:1995	Technical drawings — Simplified representation of bars and profile sections	421	
ISO 5455:1979	Technical drawings — Scales	431	
ISO 5456-1:1996	Technical drawings — Projection methods — Part 1: Synopsis	435	
ISO 5456-2:1996	Technical drawings — Projection methods — Part 2: Orthographic representations	443	
ISO 5456-3:1996	Technical drawings — Projection methods — Part 3: Axonometric representations	453	
ISO 5456-4:1996	Technical drawings — Projection methods — Part 4: Central projection	465	
ISO 5457:1999	Technical product documentation — Sizes and layout of drawing sheets	505	
ISO 6412-1:1989	Technical drawings — Simplified representation of pipelines — Part 1: General rules and orthogonal representation	513	
ISO 6412-2:1989	Technical drawings — Simplified representation of pipelines — Part 2: Isometric projection	527	
ISO 6412-3:1993	Technical drawings — Simplified representation of pipelines — Part 3: Terminal features of ventilation and drainage systems	541	
ISO 6413:1988	Technical drawings — Representation of splines and serrations	549	
ISO 6428:1982	Technical drawings — Requirements for microcopying	557	
ISO 6433:1981	Technical drawings — Item references	563	
ISO 7200:1984	Technical drawings — Title blocks	567	
ISO 7573:1983	Technical drawings — Item lists	573	
ISO 12753-1:1999	Compasses — Part 1: Nomenclature, illustrations and equivalent terms	577	
ISO 12753-2:1999	Compasses — Part 2: Requirements, designation and marking	633	
ISO 10209-1:1992	Technical product documentation — Vocabulary — Part 1: Terms relating to technical drawings: general and types of drawings	643	

		Vol. 1	Vol. 2
ISO 10209-2:1993	Technical product documentation — Vocabulary — Part 2: Terms relating to projection methods	655	
ISO 10209-4:1999	Technical product documentation — Vocabulary — Part 4: Terms relating to construction documentation	673	
ISO/TR 10623:1991	Technical product documentation — Requirements for computer-aided design and draughting — Vocabulary	697	
ISO 11442-1:1993	Technical product documentation — Handling of computer-based technical information — Part 1: Security requirements	727	
ISO 11442-2:1993	Technical product documentation — Handling of computer-based technical information — Part 2: Original documentation	733	
ISO 11442-3:1993	Technical product documentation — Handling of computer-based technical information — Part 3: Phases in the product design process	737	
ISO 11442-4:1993	Technical product documentation — Handling of computer-based technical information — Part 4: Document management and retrieval systems	741	
ISO 11442-5:1999	Technical product documentation — Handling of computer-based technical information — Part 5: Documentation in the conceptual design stage of the development phase	749	
ISO 13567-1:1998	Technical product documentation — Organization and naming of layers for CAD — Part 1: Overview and principles	755	
ISO 13567-2:1998	Technical product documentation — Organization and naming of layers for CAD — Part 2: Concepts, format and codes used in construction documentation	763	
ISO/TR 13567-3:1999	Technical product documentation — Organization and naming of layers for CAD — Part 3: Application of ISO 13567-1 and ISO 13567-2	777	
ISO 14985:1999	Hard-copy output of engineering drawings — Specification for the structure of control files	795	

	Vol. 1	Vol. 2
Part 2: Mechanical engineering drawings		
ISO 1101:1983	Technical drawings — Geometrical tolerancing — Tolerancing of form, orientation, location and run-out — Generalities, definitions, symbols, indications on drawings	17
ISO 1302:2002	Geometrical Product Specifications (GPS) — Indication of surface texture in technical product documentation	45
ISO 1660:1987	Technical drawings — Dimensioning and tolerancing of profiles	97
ISO 2162-1:1993	Technical product documentation — Springs — Part 1: Simplified representation	105
ISO 2162-2:1993	Technical product documentation — Springs — Part 2: Presentation of data for cylindrical helical compression springs	113
ISO 2162-3:1993	Technical product documentation — Springs — Part 3: Vocabulary	123
ISO 2203:1973	Technical drawings — Conventional representation of gears	135
ISO 2692:1988	Technical drawings — Geometrical tolerancing — Maximum material principle	143
ISO 2692:1988 / Amd. 1:1992	Amendment 1:1992 to ISO 2692:1988 — Least material requirement	169
ISO 3040:1990	Technical drawings — Dimensioning and tolerancing — Cones	179
ISO 5459:1981	Technical drawings — Geometrical tolerancing — Datums and datum-systems for geometrical tolerances	189
ISO/TR 5460:1985	Technical drawings — Geometrical tolerancing — Tolerancing of form, orientation, location and run-out — Verification principles and methods — Guidelines	209
ISO 5845-1:1995	Technical drawings — Simplified representation of the assembly of parts with fasteners — Part 1: General principles	281
ISO 5845-2:1995	Technical drawings — Simplified representation of the assembly of parts with fasteners — Part 2: Rivets for aerospace equipment	291
ISO 6410-1:1993	Technical drawings — Screw threads and threaded parts — Part 1: General conventions	303

		Vol. 1	Vol. 2
ISO 6410-2:1993	Technical drawings — Screw threads and threaded parts — Part 2: Screw thread inserts		315
ISO 6410-3:1993	Technical drawings — Screw threads and threaded parts — Part 3: Simplified representation		325
ISO 6411:1982	Technical drawings — Simplified representation of centre holes		333
ISO 7083:1983	Technical drawings — Symbols for geometrical tolerancing — Proportions and dimensions		341
ISO 8015:1985	Technical drawings — Fundamental tolerancing principle		353
ISO 8826-1:1989	Technical drawings — Rolling bearings — Part 1: General simplified representation		361
ISO 8826-2:1994	Technical drawings — Rolling bearings — Part 2: Detailed simplified representation		367
ISO 9222-1:1989	Technical drawings — Seals for dynamic application — Part 1: General simplified representation		381
ISO 9222-2:1989	Technical drawings — Seals for dynamic application — Part 2: Detailed simplified representation		387
ISO 10578:1992	Technical drawings — Tolerancing of orientation and location — Projected tolerance zone		403
ISO 10579:1993	Technical drawings — Dimensioning and tolerancing — Non-rigid parts		413
ISO 13715:2000	Technical drawings — Edges of undefined shape — Vocabulary and indications		421
ISO 14660-1:1999	Geometrical Product Specifications (GPS) — Geometrical features — Part 1: General terms and definitions		441
ISO 14660-2:1999	Geometrical Product Specifications (GPS) — Geometrical features — Part 2: Extracted median line of a cylinder and a cone, extracted median surface, local size of an extracted feature		455
ISO 15785:2002	Technical drawings — Symbolic presentation and indication of adhesive, fold and pressed joints		469
ISO 15787:2001	Technical product documentation — Heat-treated ferrous parts — Presentation and indications		481

		Vol. 1	Vol. 2
Part 3: Construction drawings			
ISO 3766:1995	Construction drawings — Simplified representation of concrete reinforcement		519
ISO 4066:1994	Construction drawings — Bar scheduling		529
ISO 4069:1977	Building and civil engineering drawings — Representation of areas on sections and views — General principles		541
ISO 4157-1:1998	Construction drawings — Designation systems — Part 1: Buildings and parts of buildings		545
ISO 4157-2:1998	Construction drawings — Designation systems — Part 2: Room names and numbers		553
ISO 4157-3:1998	Construction drawings — Designation systems — Part 3: Room identifiers		559
ISO 4172:1991	Technical drawings — Construction drawings — Drawings for the assembly of prefabricated structures		565
ISO 6284:1996	Construction drawings — Indication of limit deviations		579
ISO 7437:1990	Technical drawings — Construction drawings — General rules for execution of production drawings for prefabricated structural components		585
ISO 7518:1983	Technical drawings — Construction drawings — Simplified representation of demolition and rebuilding		591
ISO 7519:1991	Technical drawings — Construction drawings — General principles of presentation for general arrangement and assembly drawings		595
ISO 8048:1984	Technical drawings — Construction drawings — Representation of views, sections and cuts		605
ISO 8560:1986	Technical drawings — Construction drawings — Representation of modular sizes, lines and grids ...		613
ISO 9431:1990	Construction drawings — Spaces for drawing and for text, and title blocks on drawing sheets		623
ISO/TR 10127:1990	Computer-Aided Design (CAD) Technique — Use of computers for the preparation of construction drawings		631
ISO 10135:1994	Technical drawings — Simplified representation of moulded, cast and forged parts		651
ISO 11091:1994	Construction drawings — Landscape drawing practice		665

Part 4: Drawing equipment

ISO 9175-1:1988	Tubular tips for hand-held technical pens using India ink on tracing paper — Part 1: Definitions, dimensions, designation and marking	681
ISO 9175-2:1988	Tubular tips for hand-held technical pens using India ink on tracing paper — Part 2: Performance, test parameters and test conditions	687
ISO 9176:1988	Tubular technical pens — Adaptor for compasses	693
ISO 9177-1:1989	Mechanical pencils — Part 1: Classification, dimensions, performance requirements and testing	699
ISO 9177-2:1989	Mechanical pencils — Part 2: Black leads — Classification and dimensions	707
ISO 9177-3:1994	Mechanical pencils — Part 3: Black leads — Bending strengths of HB leads	711
ISO 9178-1:1988	Templates for lettering and symbols — Part 1: General principles and identification markings	717
ISO 9178-2:1988	Templates for lettering and symbols — Part 2: Slot widths for wood-cased pencils, clutch pencils and fine-lead pencils	723
ISO 9178-3:1989	Templates for lettering and symbols — Part 3: Slot widths for technical pens with tubular tips in accordance with ISO 9175-1	727
ISO 9180:1988	Black leads for wood-cased pencils — Classification and diameters	731
ISO 9957-1:1992	Fluid draughting media — Part 1: Water-based India ink — Requirements and test conditions	735
ISO 9957-2:1995	Fluid draughting media — Part 2: Water-based non-India ink — Requirements and test conditions	743
ISO 9957-3:1997	Fluid draughting media — Part 3: Water-based coloured draughting inks — Requirements and test conditions	751
ISO 9958-1:1992	Draughting media for technical drawings — Draughting film with polyester base — Part 1: Requirements and marking	763
ISO 9958-2:1992	Draughting media for technical drawings — Draughting film with polyester base — Part 2: Determination of properties	775

	Vol. 1	Vol. 2
ISO 9959-1:1992	Numerically controlled draughting machines — Drawing test for the evaluation of performance — Part 1: Vector plotters	785
ISO 9959-2:1999	Numerically controlled draughting machines — Draughting test for evaluation of performance — Part 2: Monochrome raster plotters	801
ISO 9960-1:1992	Draughting instruments with or without graduation — Part 1: Draughting scale rules	819
ISO 9960-2:1994	Draughting instruments with or without graduation — Part 2: Protractors	831
ISO 9960-3:1994	Draughting instruments with or without graduation — Part 3: Set squares	837
ISO 9961:1992	Draughting media for technical drawings — Natural tracing paper	845
ISO 9962-1:1992	Manually operated draughting machines — Part 1: Definitions, classification and designation	859
ISO 9962-2:1992	Manually operated draughting machines — Part 2: Characteristics, performance, inspection and marking	871
ISO 9962-3:1994	Manually operated draughting machines — Part 3: Dimensions of scale rule chuck plates	881
ISO 12756:1998	Drawing and writing instruments — Ball point pens and roller ball pens — Vocabulary	889
ISO 12757-2:1998	Ball point pens and refills — Part 2: Documentary use (DOC)	899
ISO 14145-2:1998	Roller ball pens and refills — Part 2: Documentary use (DOC)	909
ISO 16018:1999	Technical drawings — Numerically controlled draughting machines — Draughting media and tools for vector plotters	917
Standards by numerical order	815	927
Subject index	817	929

SUBJECT INDEX

Subject	Standard	Page	
		Vol. 1	Vol. 2
Adaptor for compasses	ISO 9176:1988		693
Adhesive, fold and pressed joints	ISO 15785:2002		469
Angular dimensions	ISO 406:1987	183	
Angular dimensions	ISO 406:1987	183	
Aperture card for 35 mm microfilm	ISO 3272-3:2001	381	
Aperture cards	ISO 3272-5:1999	401	
Areas on sections and views	ISO 4069:1977		541
Axonometric representations	ISO 5456-3:1996	453	
Ball point pens and refills	ISO 12757-2:1998		899
Ball point pens and roller ball pens	ISO 12756:1998		889
Bar scheduling	ISO 4066:1994		529
Bars and profile sections	ISO 5261:1995	421	
Basic conventions and applications for leader lines and reference lines	ISO 128-22:1999	47	
Basic conventions for cuts and sections	ISO 128-40:2001	135	
Basic conventions for lines	ISO 128-20:1996	17	
Basic conventions for representing areas on cuts and sections	ISO 128-50:2001	157	
Basic conventions for views	ISO 128-30:2001	101	
Bending strengths of HB leads	ISO 9177-3:1994		711
Black leads	ISO 9177-2:1989		707
Black leads	ISO 9177-3:1994		711
Black leads for wood-cased pencils	ISO 9180:1988		731
Buildings and parts of buildings	ISO 4157-1:1998		545
CAD lettering of the Latin alphabet, numerals and marks	ISO 3098-5:1997	287	
Cast and forged parts	ISO 10135:1994		651
Central projection	ISO 5456-4:1996	465	
Centre holes	ISO 6411:1982		333
Codes used in construction documentation	ISO 13567-2:1998	763	
Compasses	ISO 12753-1:1999	577	
Compasses	ISO 12753-2:1999	633	
Computer-Aided Design (CAD) Technique	ISO/TR 10127:1990		631
Computer-aided design and draughting	ISO/TR 10623:1991	697	
Cones	ISO 3040:1990		179
Control files	ISO 14985:1999	795	

Subject	Standard	Page	
		Vol. 1	Vol. 2
Conventional representation of gears	ISO 2203:1973		135
Cylindrical helical compression springs	ISO 2162-2:1993		113
Cyrillic alphabet	ISO 3098-6:2000	355	
Datums and datum-systems for geometrical tolerances	ISO 5459:1981		189
Demolition and rebuilding	ISO 7518:1983		591
Designation systems	ISO 4157-1:1998		545
Designation systems	ISO 4157-2:1998		553
Designation systems	ISO 4157-3:1998		559
Diacritical and particular marks for the Latin alphabet	ISO 3098-4:2000	275	
Diazo duplicating of microfilm images in aperture cards	ISO 3272-5:1999	401	
Dimensioning	ISO 129:1985	167	
Dimensioning and tolerancing	ISO 3040:1990		179
Dimensioning and tolerancing	ISO 10579:1993		413
Dimensioning and tolerancing of profiles	ISO 1660:1987		97
Document management and retrieval systems	ISO 11442-4:1993	741	
Documentary use (DOC)	ISO 12757-2:1998		899
Documentary use (DOC)	ISO 14145-2:1998		909
Documentation in the conceptual design stage of the development phase	ISO 11442-5:1999	749	
Drainage systems	ISO 6412-3:1993	541	
Draughting film with polyester base	ISO 9958-1:1992		763
Draughting film with polyester base	ISO 9958-2:1992		775
Draughting instruments with or without graduation	ISO 9960-1:1992		819
Draughting instruments with or without graduation	ISO 9960-2:1994		831
Draughting instruments with or without graduation	ISO 9960-3:1994		837
Draughting machines	ISO 9959-1:1992		785
Draughting machines	ISO 9959-2:1999		801
Draughting machines	ISO 9962-1:1992		859
Draughting machines	ISO 9962-2:1992		871
Draughting machines	ISO 9962-3:1994		881
Draughting machines	ISO 16018:1999		917
Draughting media and tools for vector plotter	ISO 16018:1999		917
Draughting media for technical drawings	ISO 9958-1:1992		763
Draughting media for technical drawings	ISO 9958-2:1992		775
Draughting media for technical drawings	ISO 9961:1992		845
Draughting scale rules	ISO 9960-1:1992		819
Draughting test for evaluation of performance	ISO 9959-2:1999		801
Drawing and writing instruments	ISO 12756:1998		889
Drawing test for the evaluation of performance	ISO 9959-1:1992		785
Drawings for the assembly of prefabricated structures	ISO 4172:1991		565

Subject	Standard	Page	
		Vol. 1	Vol. 2
Edges of undefined shape	ISO 13715:2000		421
Enlargements from 35 mm microfilm	ISO 3272-6:2000	411	
Extracted median line of a cylinder and a cone, extracted median surface, local size of an extracted feature	ISO 14660-2:1999		455
Extracted median surface, local size of an extracted feature	ISO 14660-2:1999		455
Fasteners	ISO 5845-1:1995		281
Ferrous parts	ISO 15787:2001		481
Fluid draughting media	ISO 9957-1:1992		735
Fluid draughting media	ISO 9957-2:1995		743
Fluid draughting media	ISO 9957-3:1997		751
Format and codes used in construction documentation	ISO 13567-2:1998	763	
Fundamental tolerancing principle	ISO 8015:1985		353
Gears	ISO 2203:1973		135
General arrangement and assembly drawings	ISO 7519:1991		595
General principles of presentation	ISO 128-20:1996	17	
General principles of presentation	ISO 128-21:1997	31	
General principles of presentation	ISO 128-22:1999	47	
General principles of presentation	ISO 128-22:1999	47	
General principles of presentation	ISO 128-23:1999	57	
General principles of presentation	ISO 128-24:1999	73	
General principles of presentation	ISO 128-25:1999	89	
General principles of presentation	ISO 128-30:2001	101	
General principles of presentation	ISO 128-34:2001	117	
General principles of presentation	ISO 128-40:2001	135	
General principles of presentation	ISO 128-44:2001	145	
General principles of presentation	ISO 128-50:2001	157	
General principles of presentation for general arrangement and assembly drawings	ISO 7519:1991		595
General principles, definitions, methods of execution and special indications	ISO 129:1985	167	
General rules for execution of production drawings for prefabricated structural components	ISO 7437:1990		585
Geometrical features	ISO 14660-1:1999		441
Geometrical features	ISO 14660-2:1999		455
Geometrical Product Specifications (GPS)	ISO 1302:2002		45
Geometrical Product Specifications (GPS)	ISO 14660-1:1999		441
Geometrical Product Specifications (GPS)	ISO 14660-2:1999		455
Geometrical tolerancing	ISO 1101:1983		17
Geometrical tolerancing	ISO 2692:1988		143
Geometrical tolerancing	ISO 2692:1988 / Amd 1:1992		169

Subject	Standard	Page	
		Vol. 1	Vol. 2
Geometrical tolerancing	ISO 5459:1981		189
Geometrical tolerancing	ISO/TR 5460:1985		209
Geometrical tolerancing	ISO 7083:1983		341
Greek alphabet	ISO 3098-3:2000	265	
Grids	ISO 8560:1986		613
Hand-held technical pens using India ink on tracing paper ...	ISO 9175-1:1988		681
Hand-held technical pens using India ink on tracing paper ...	ISO 9175-2:1988		687
Handling of computer-based technical information	ISO 11442-1:1993	727	
Handling of computer-based technical information	ISO 11442-2:1993	733	
Handling of computer-based technical information	ISO 11442-3:1993	737	
Handling of computer-based technical information	ISO 11442-4:1993	741	
Handling of computer-based technical information	ISO 11442-5:1999	749	
Hard-copy output of engineering drawings	ISO 14985:1999	795	
HB leads	ISO 9177-3:1994		711
Heat-treated ferrous parts	ISO 15787:2001		481
India ink	ISO 9957-1:1992		735
Indication of limit deviations	ISO 6284:1996		579
Indication of surface texture in technical product documentation	ISO 1302:2002		45
Ink	ISO 9957-2:1995		743
Inks	ISO 9957-3:1997		751
Item lists	ISO 7573:1983	573	
Item references	ISO 6433:1981	563	
Landscape drawing practice	ISO 11091:1994		665
Latin alphabet	ISO 3098-5:1997	287	
Latin alphabet, numerals and marks	ISO 3098-2:2000	255	
Layers for CAD	ISO 13567-1:1998	755	
Layers for CAD	ISO 13567-2:1998	763	
Layers for CAD	ISO/TR 13567-3:1999	777	
Layout of drawing sheets	ISO 5457:1999	505	
Least material requirement	ISO 2692:1988 / Amd 1:1992		169
Lettering	ISO 3098-0:1997	243	
Lettering	ISO 3098-2:2000	255	
Lettering	ISO 3098-3:2000	265	
Lettering	ISO 3098-4:2000	275	
Lettering	ISO 3098-5:1997	287	
Lettering	ISO 3098-6:2000	355	
Lettering and symbols	ISO 9178-1:1988		717
Lettering and symbols	ISO 9178-2:1988		723
Lettering and symbols	ISO 9178-3:1989		727

Subject	Standard	Page	
		Vol. 1	Vol. 2
Lettering of the Latin alphabet, numerals and marks	ISO 3098-5:1997	287	
Limit deviations	ISO 6284:1996		579
Linear and angular dimensions	ISO 406:1987	183	
Lines and grids	ISO 8560:1986		613
Lines on construction drawings	ISO 128-23:1999	57	
Lines on mechanical engineering drawings	ISO 128-24:1999	73	
Lines on shipbuilding drawings	ISO 128-25:1999	89	
Manually operated draughting machines	ISO 9962-1:1992		859
Manually operated draughting machines	ISO 9962-2:1992		871
Manually operated draughting machines	ISO 9962-3:1994		881
Maximum material principle	ISO 2692:1988		143
Maximum material principle	ISO 2692:1988 / Amd 1:1992		169
Mechanical pencils	ISO 9177-1:1989		699
Mechanical pencils	ISO 9177-2:1989		707
Mechanical pencils	ISO 9177-3:1994		711
Microcopying	ISO 6428:1982	557	
Microfilm	ISO 3272-6:2000	411	
Microfilming of technical drawings and other drawing office documents	ISO 3272-1:1983	365	
Microfilming of technical drawings and other drawing office documents	ISO 3272-2:1994	371	
Microfilming of technical drawings and other drawing office documents	ISO 3272-3:2001	381	
Microfilming of technical drawings and other drawing office documents	ISO 3272-4:1994	393	
Microfilming of technical drawings and other drawing office documents	ISO 3272-5:1999	401	
Microfilming of technical drawings and other drawing office documents	ISO 3272-6:2000	411	
Modular sizes, lines and grids	ISO 8560:1986		613
Monochrome raster plotters	ISO 9959-2:1999		801
Moulded, cast and forged parts	ISO 10135:1994		651
Naming of layers for CAD	ISO 13567-1:1998	755	
Naming of layers for CAD	ISO 13567-2:1998	763	
Naming of layers for CAD	ISO/TR 13567-3:1999	777	
Natural tracing paper	ISO 9961:1992		845
Non-rigid parts	ISO 10579:1993		413
Numerals and marks	ISO 3098-2:2000	255	
Numerals and marks	ISO 3098-5:1997	287	
Numerically controlled draughting machines	ISO 9959-1:1992		785
Numerically controlled draughting machines	ISO 9959-2:1999		801

Subject	Standard	Page	
		Vol. 1	Vol. 2
Numerically controlled draughting machines	ISO 16018:1999		917
Organization and naming of layers for CAD	ISO 13567-1:1998	755	
Organization and naming of layers for CAD	ISO 13567-2:1998	763	
Organization and naming of layers for CAD	ISO/TR 13567-3:1999	777	
Orthographic representations	ISO 5456-2:1996	443	
Output of engineering drawings	ISO 14985:1999	795	
Phases in the product design process	ISO 11442-3:1993	737	
Pipelines	ISO 6412-1:1989	513	
Pipelines	ISO 6412-2:1989	527	
Pipelines	ISO 6412-3:1993	541	
Prefabricated structural components	ISO 7437:1990		585
Prefabricated structures	ISO 4172:1991		565
Preparation of lines by CAD systems	ISO 128-21:1997	31	
Presentation and indication of adhesive, fold and pressed joints	ISO 15785:2002		469
Presentation for general arrangement and assembly drawings	ISO 7519:1991		595
Production drawings for prefabricated structural components	ISO 7437:1990		585
Profile sections	ISO 5261:1995	421	
Projected tolerance zone	ISO 10578:1992		403
Projection methods	ISO 5456-1:1996	435	
Projection methods	ISO 5456-2:1996	443	
Projection methods	ISO 5456-3:1996	453	
Projection methods	ISO 5456-4:1996	465	
Proportions and dimensions	ISO 7083:1983		341
Protractors	ISO 9960-2:1994		831
Quality criteria and control of systems for enlargements from 35 mm microfilm	ISO 3272-6:2000	411	
Raster plotters	ISO 9959-2:1999		801
Reinforcement	ISO 3766:1995		519
Representation of areas on sections and views	ISO 4069:1977		541
Representation of bars and profile sections	ISO 5261:1995	421	
Representation of centre holes	ISO 6411:1982		333
Representation of concrete reinforcement	ISO 3766:1995		519
Representation of demolition and rebuilding	ISO 7518:1983		591
Representation of gears	ISO 2203:1973		135
Representation of modular sizes, lines and grids	ISO 8560:1986		613
Representation of moulded, cast and forged parts	ISO 10135:1994		651
Representation of pipelines	ISO 6412-1:1989	513	
Representation of pipelines	ISO 6412-2:1989	527	

Subject	Standard	Page	
		Vol. 1	Vol. 2
Representation of pipelines	ISO 6412-3:1993	541	
Representation of splines and serrations	ISO 6413:1988	549	
Representation of the assembly of parts with fasteners	ISO 5845-1:1995		281
Representation of the assembly of parts with fasteners	ISO 5845-2:1995		291
Representation of views, sections and cuts	ISO 8048:1984		605
Roller ball pens and refills	ISO 14145-2:1998		909
Rolling bearings	ISO 8826-1:1989		361
Rolling bearings	ISO 8826-2:1994		367
Room identifiers	ISO 4157-3:1998		559
Room names and numbers	ISO 4157-2:1998		553
Scale rules	ISO 9960-1:1992		819
Scales	ISO 5455:1979	431	
Screw thread inserts	ISO 6410-2:1993		315
Screw threads and threaded parts	ISO 6410-1:1993		303
Screw threads and threaded parts	ISO 6410-2:1993		315
Screw threads and threaded parts	ISO 6410-3:1993		325
Seals for dynamic application	ISO 9222-1:1989		381
Seals for dynamic application	ISO 9222-2:1989		387
Sections and cuts	ISO 8048:1984		605
Sections on mechanical engineering drawings	ISO 128-44:2001	145	
Security requirements	ISO 11442-1:1993	727	
Serrations	ISO 6413:1988	549	
Set squares	ISO 9960-3:1994		837
Silver gelatin microfilms	ISO 3272-2:1994	371	
Simplified representation of bars and profile sections	ISO 5261:1995	421	
Simplified representation of centre holes	ISO 6411:1982		333
Simplified representation of concrete reinforcement	ISO 3766:1995		519
Simplified representation of demolition and rebuilding	ISO 7518:1983		591
Simplified representation of moulded, cast and forged parts	ISO 10135:1994		651
Simplified representation of pipelines	ISO 6412-1:1989	513	
Simplified representation of pipelines	ISO 6412-2:1989	527	
Simplified representation of pipelines	ISO 6412-3:1993	541	
Simplified representation of the assembly of parts with fasteners	ISO 5845-1:1995		281
Simplified representation of the assembly of parts with fasteners	ISO 5845-2:1995		291
Sizes and layout of drawing sheets	ISO 5457:1999	505	
Slot widths for technical pens with tubular tips in accordance with ISO 9175-1	ISO 9178-3:1989		727

Subject	Standard	Page	
		Vol. 1	Vol. 2
Slot widths for wood-cased pencils, clutch pencils and fine-lead pencils	ISO 9178-2:1988		723
Spaces for drawing and for text, and title blocks on drawing sheets	ISO 9431:1990		623
Specification for the structure of control files	ISO 14985:1999	795	
Splines and serrations	ISO 6413:1988	549	
Springs	ISO 2162-1:1993		105
Springs	ISO 2162-2:1993		113
Springs	ISO 2162-3:1993		123
Symbolic presentation and indication of adhesive, fold and pressed joints	ISO 15785:2002		469
Symbolic representation	ISO 2553:1992	189	
Symbols for geometrical tolerancing	ISO 7083:1983		341
Technical pens using India ink on tracing paper	ISO 9175-1:1988		681
Technical pens using India ink on tracing paper	ISO 9175-2:1988		687
Technical product documentation	ISO 3098-0:1997	243	
Technical product documentation	ISO 3098-2:2000	255	
Technical product documentation	ISO 3098-3:2000	265	
Technical product documentation	ISO 3098-4:2000	275	
Technical product documentation	ISO 3098-5:1997	287	
Technical product documentation	ISO 3098-6:2000	355	
Technical product documentation	ISO 5457:1999	505	
Technical product documentation	ISO 10209-1:1992	643	
Technical product documentation	ISO 10209-2:1993	655	
Technical product documentation	ISO 10209-4:1999	673	
Technical product documentation	ISO/TR 10623:1991	697	
Technical product documentation	ISO 11442-1:1993	727	
Technical product documentation	ISO 11442-2:1993	733	
Technical product documentation	ISO 11442-3:1993	737	
Technical product documentation	ISO 11442-4:1993	741	
Technical product documentation	ISO 11442-5:1999	749	
Technical product documentation	ISO 13567-1:1998	755	
Technical product documentation	ISO 13567-2:1998	763	
Technical product documentation	ISO/TR 13567-3:1999	777	
Technical product documentation	ISO 1302:2002		45
Technical product documentation	ISO 2162-1:1993		105
Technical product documentation	ISO 2162-2:1993		113
Technical product documentation	ISO 2162-3:1993		123
Technical product documentation	ISO 15787:2001		481
Templates for lettering and symbols	ISO 9178-1:1988		717
Templates for lettering and symbols	ISO 9178-2:1988		723

Subject	Standard	Page	
		Vol. 1	Vol. 2
Templates for lettering and symbols	ISO 9178-3:1989		727
Terms relating to construction documentation	ISO 10209-4:1999	673	
Terms relating to projection methods	ISO 10209-2:1993	655	
Terms relating to technical drawings	ISO 10209-1:1992	643	
Test procedures for diazo duplicating of microfilm images in aperture cards	ISO 3272-5:1999	401	
Threaded parts	ISO 6410-1:1993		303
Threaded parts	ISO 6410-2:1993		315
Threaded parts	ISO 6410-3:1993		325
Title blocks	ISO 7200:1984	567	
Title blocks on drawing sheets	ISO 9431:1990		623
Tolerancing	ISO 10579:1993		413
Tolerancing of form, orientation, location and run-out	ISO 1101:1983		17
Tolerancing of form, orientation, location and run-out	ISO/TR 5460:1985		209
Tolerancing of linear and angular dimensions	ISO 406:1987	183	
Tolerancing of orientation and location	ISO 10578:1992		403
Tolerancing of profiles	ISO 1660:1987		97
Tolerancing principle	ISO 8015:1985		353
Tubular technical pens	ISO 9176:1988		693
Tubular tips for hand-held technical pens using India ink on tracing paper	ISO 9175-1:1988		681
Tubular tips for hand-held technical pens using India ink on tracing paper	ISO 9175-2:1988		687
Vector plotters	ISO 9959-1:1992		785
Ventilation and drainage systems	ISO 6412-3:1993	541	
Verification principles and methods	ISO/TR 5460:1985		209
Views on mechanical engineering drawings	ISO 128-34:2001	117	
Views, sections and cuts	ISO 8048:1984		605
Vocabulary	ISO 10209-1:1992	643	
Vocabulary	ISO 10209-2:1993	655	
Vocabulary	ISO 10209-4:1999	673	
Vocabulary	ISO/TR 10623:1991	697	
Vocabulary	ISO 2162-3:1993		123
Vocabulary	ISO 12756:1998		889
Vocabulary and indications	ISO 13715:2000		421
Water-based coloured draughting inks	ISO 9957-3:1997		751
Water-based India ink	ISO 9957-1:1992		735
Water-based non-India ink	ISO 9957-2:1995		743
Welded, brazed and soldered joints	ISO 2553:1992	189	
Wood-cased pencils	ISO 9180:1988		731